

FLEX-PLEX AFFORDABLE HOMES

© Tom Bender • 9 March 2008

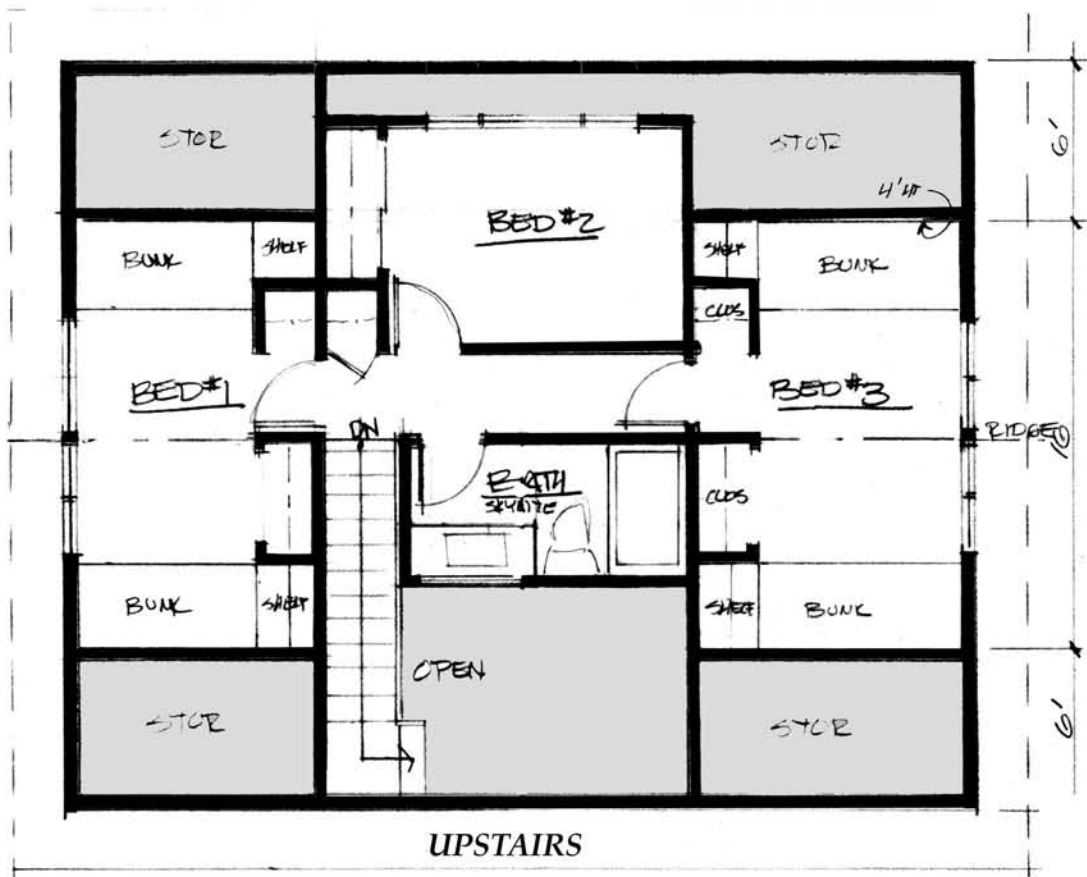


- *Modular factory construction, using coastal specifications and near-net-zero-energy design.*
- *One and one-half story design allows delivery on a single trailer, cutting delivery costs.*
- *Compact, two-level design allows 20% savings in construction and energy operating costs.*
- *Flex-home design allows different configurations of use over time - from 5-bedroom extended family to up and down duplexes, home occupations, and accessory dwelling units.*



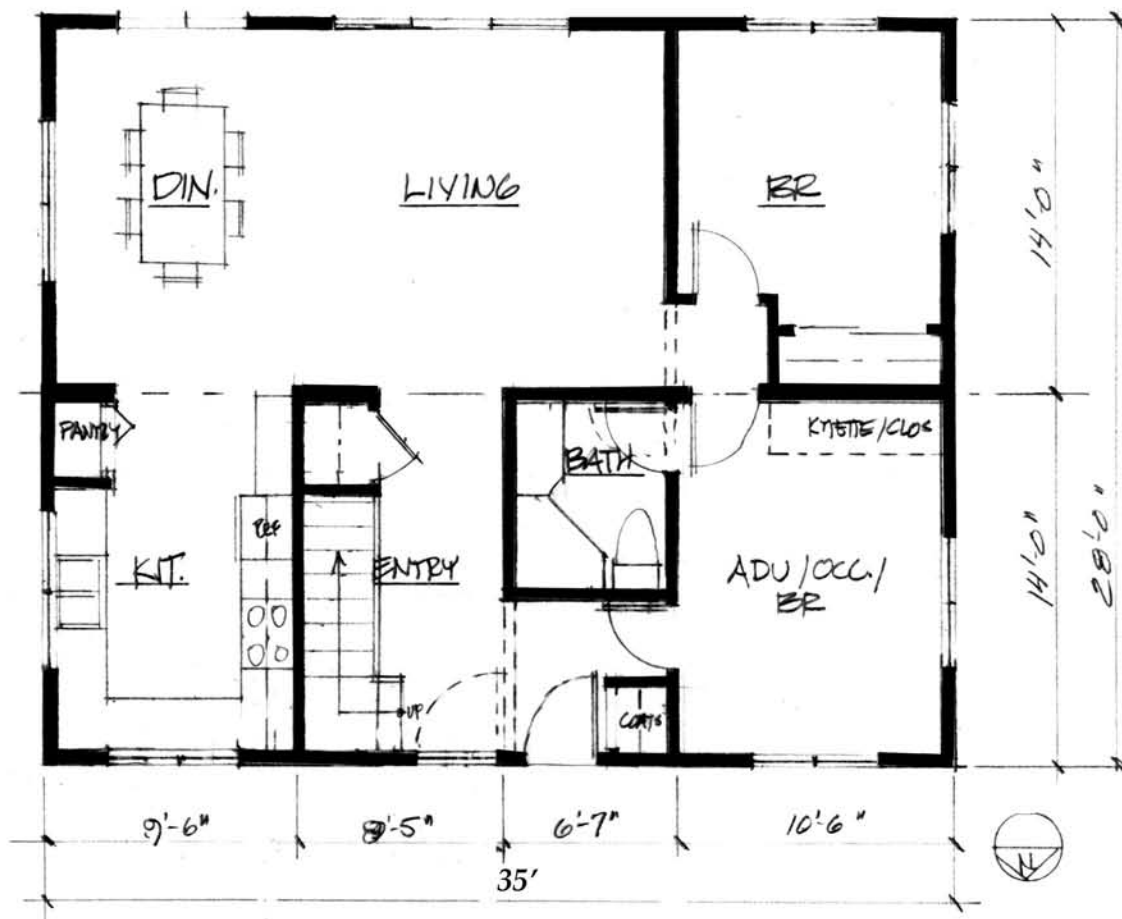
1970s prototype, with entry porch and woodshed installed, and decks, below. Roof and window orientation for passive solar.

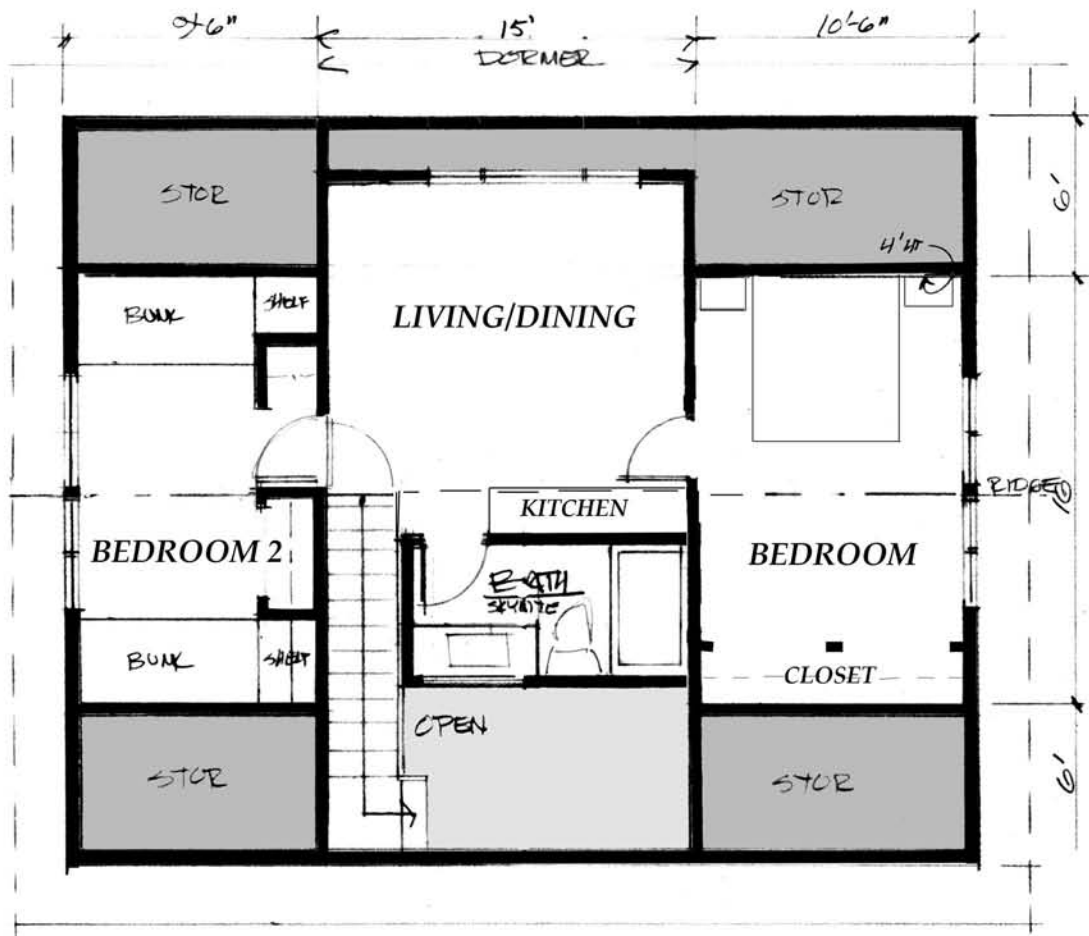




FLEXPLEX BASIC CONFIGURATION

DOWNSTAIRS

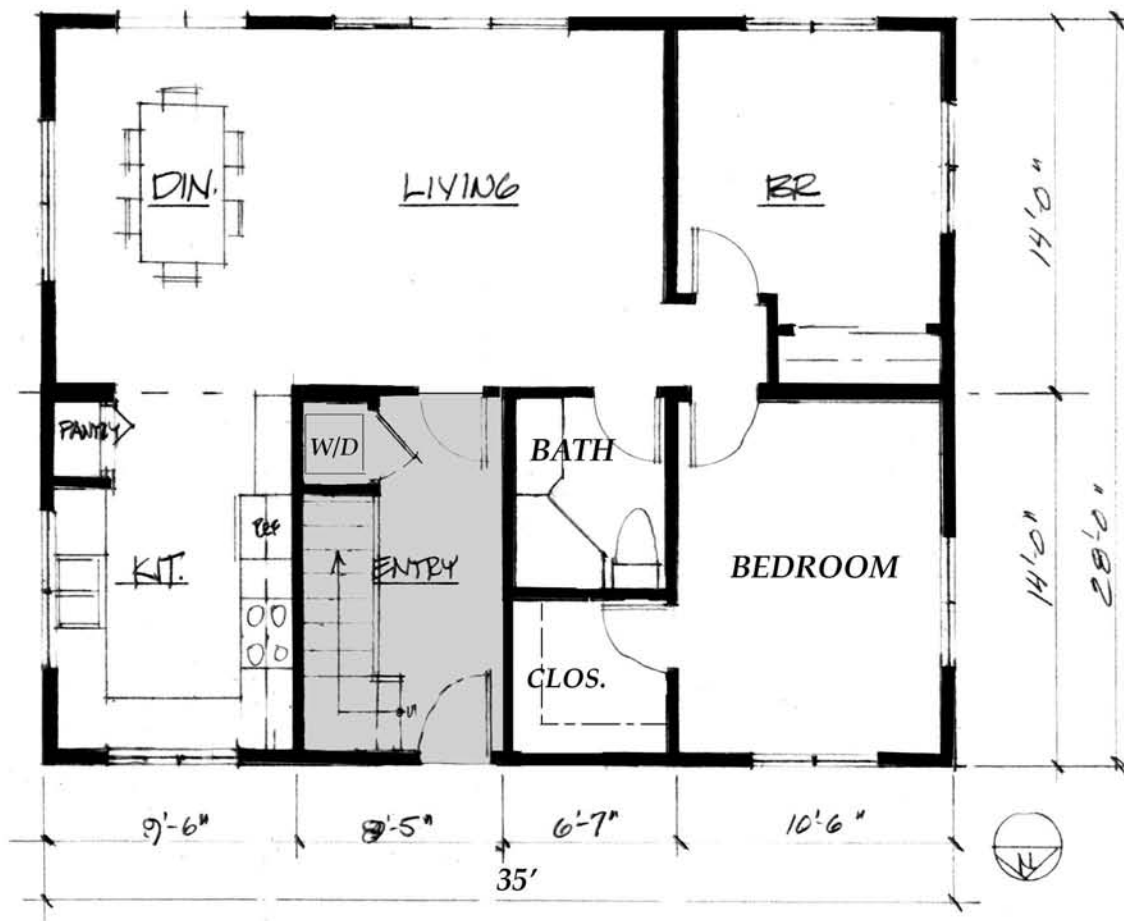


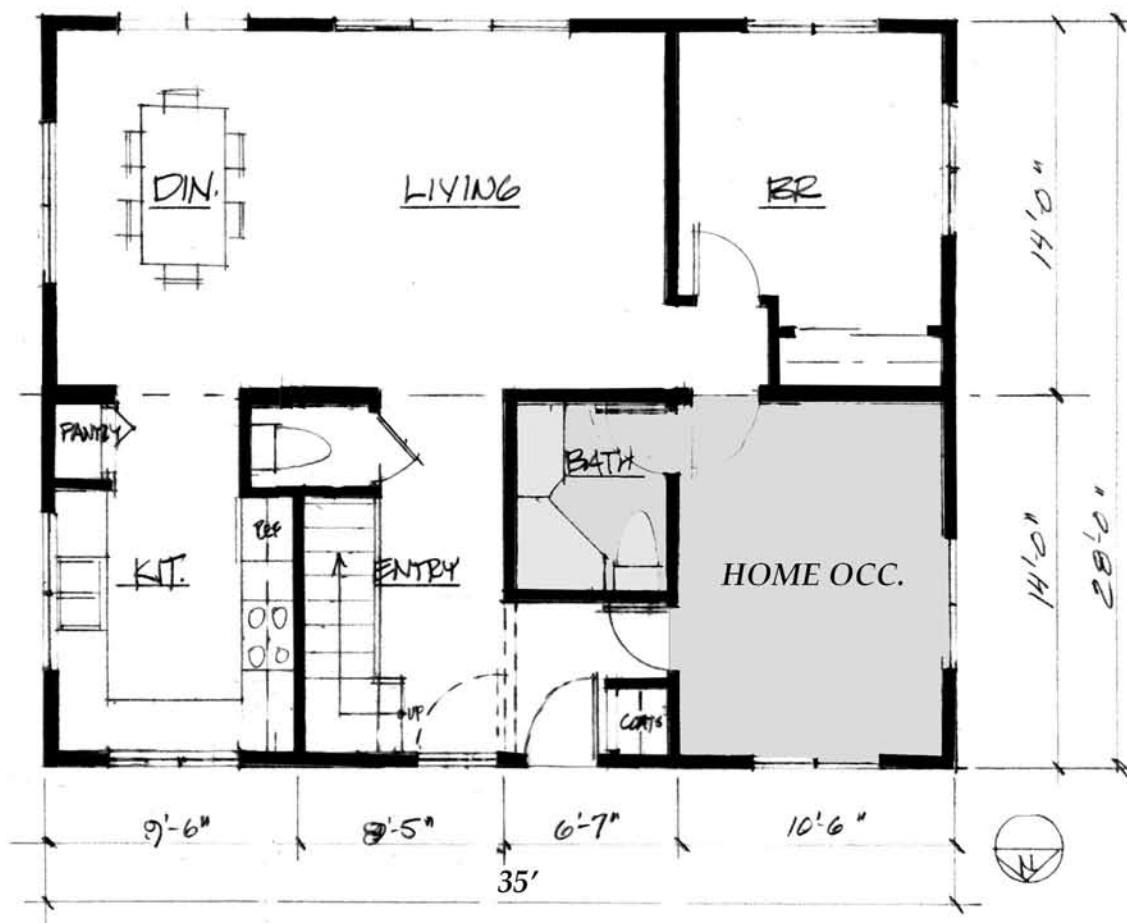


UPSTAIRS DUPLEX CONFIGURATION - 560 sq.ft.

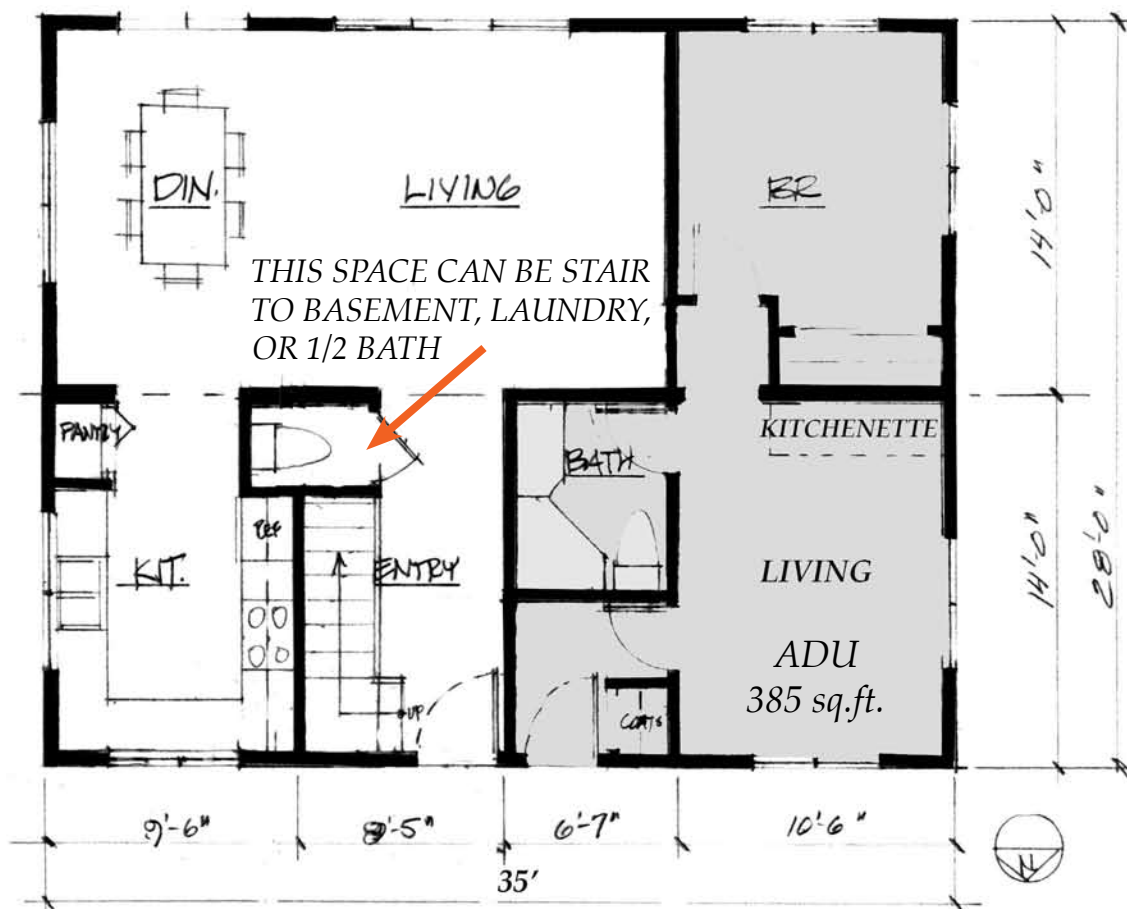
FLEXPLEX AS 2-BEDROOM DUPLEXES

DOWNSTAIRS DUPLEX CONFIGURATION- 860 sq.ft.

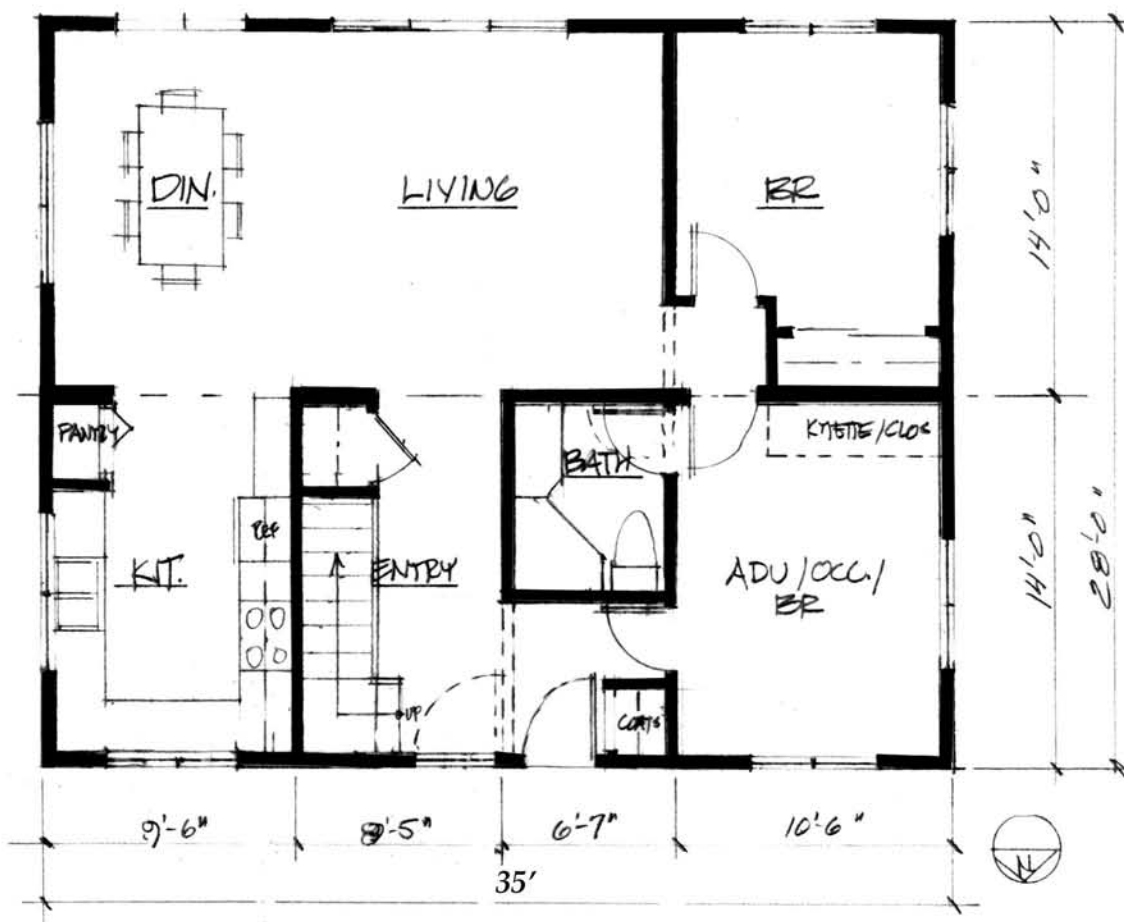




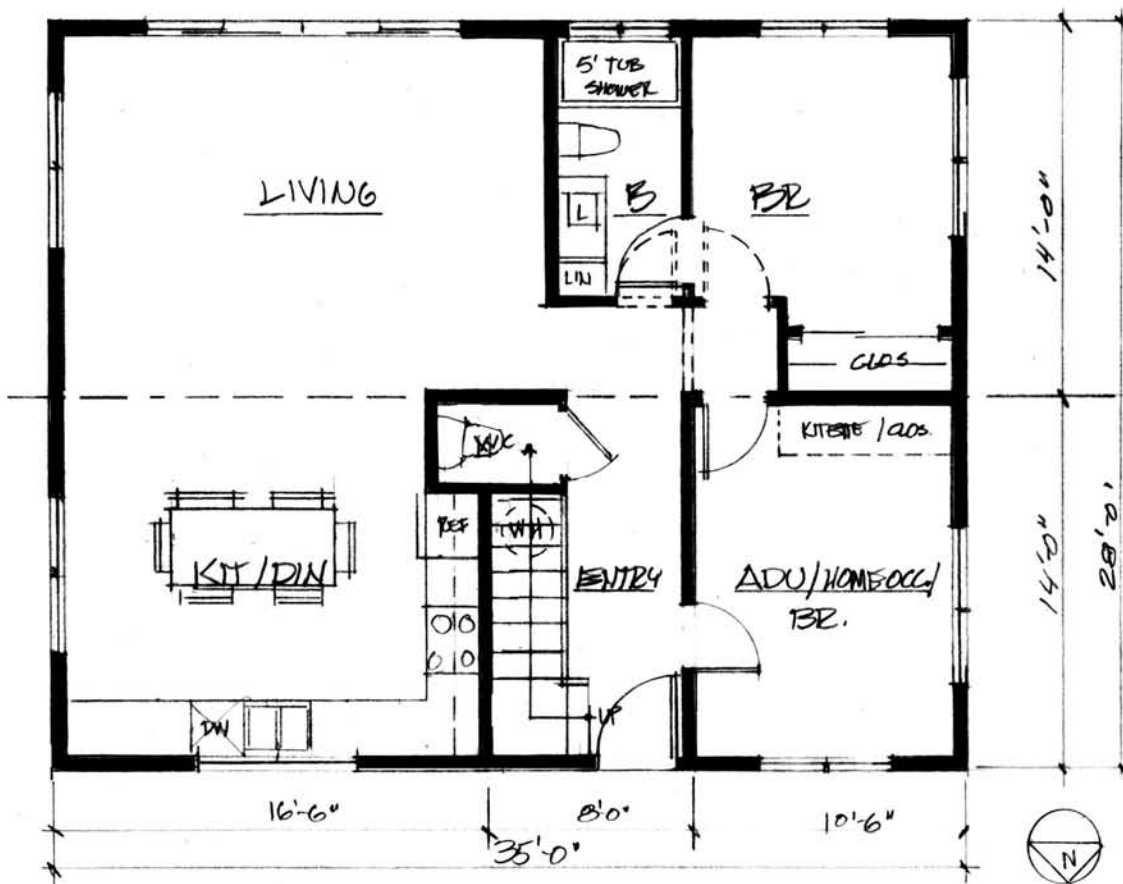
HOME OCCUPATION

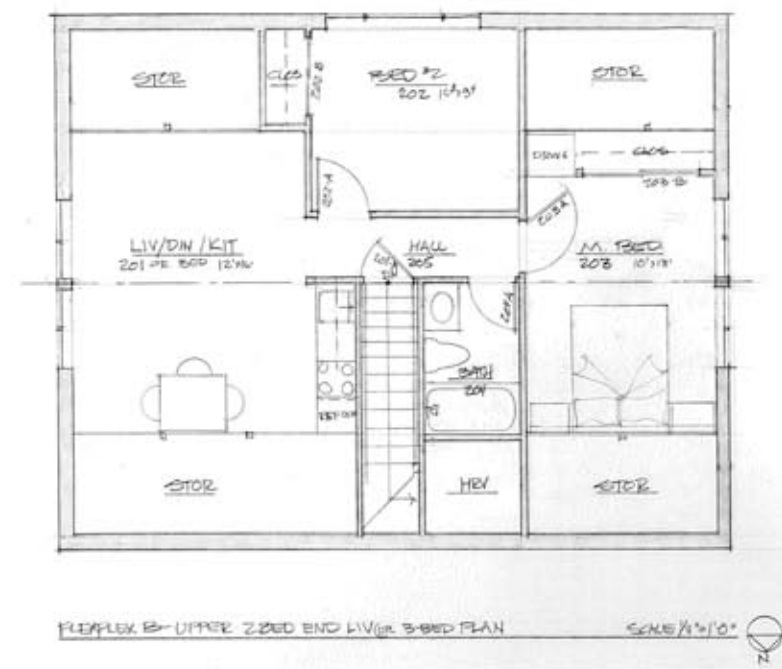
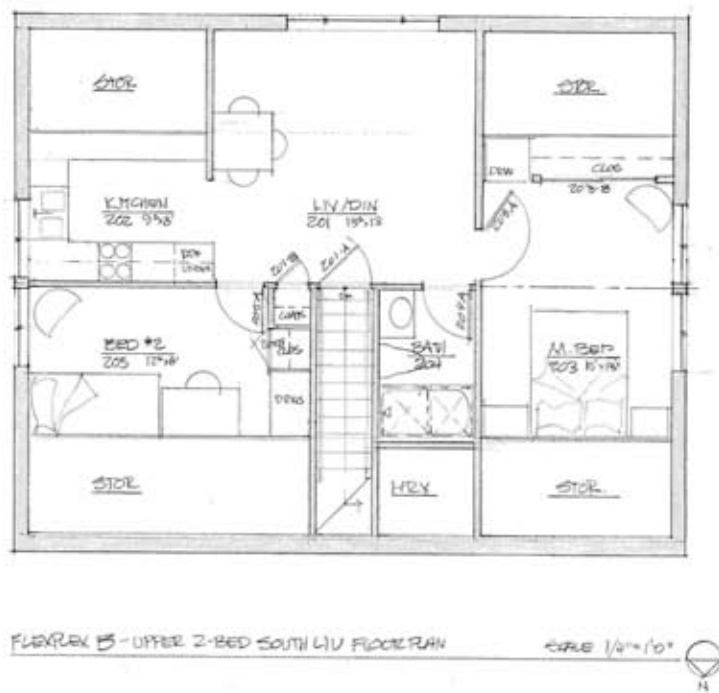
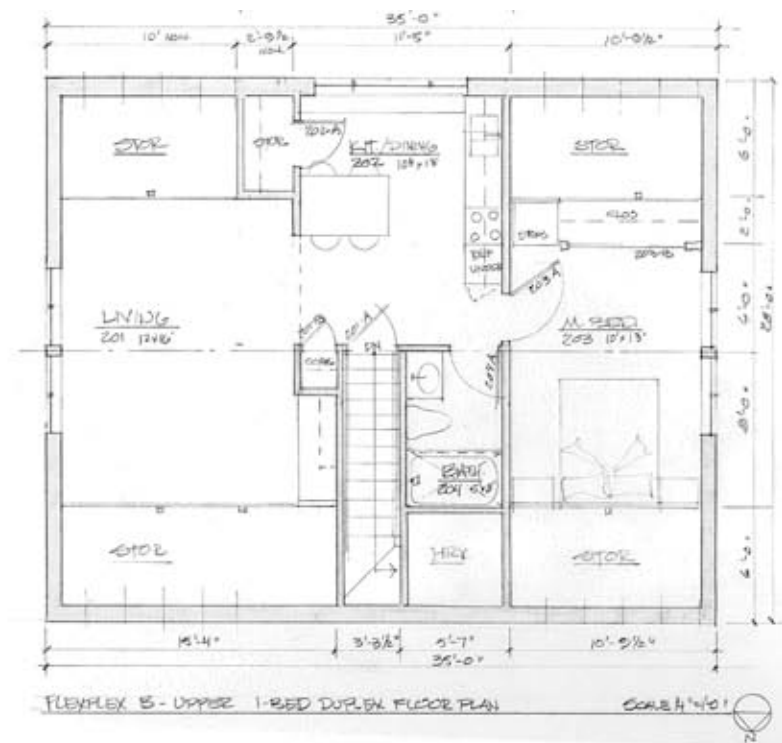
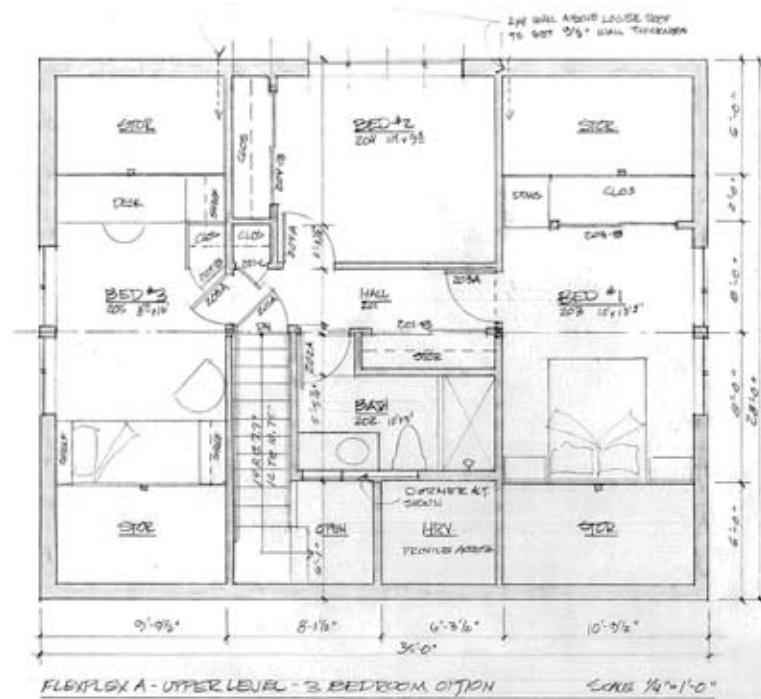


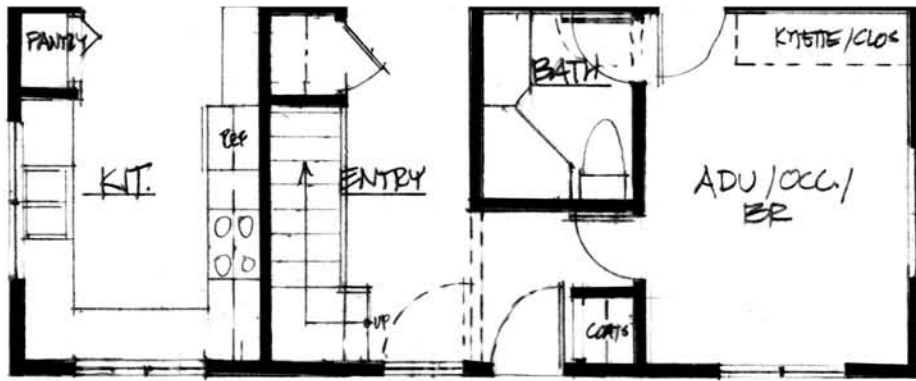
ACCESSORY DWELLING UNIT CONFIGURATION



FLEXPLEX PLAN VARIATIONS



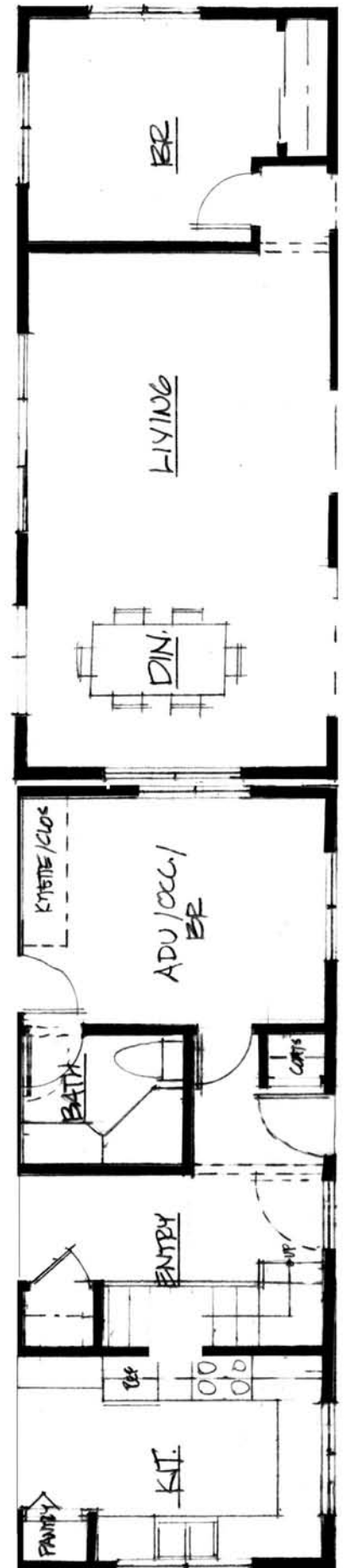


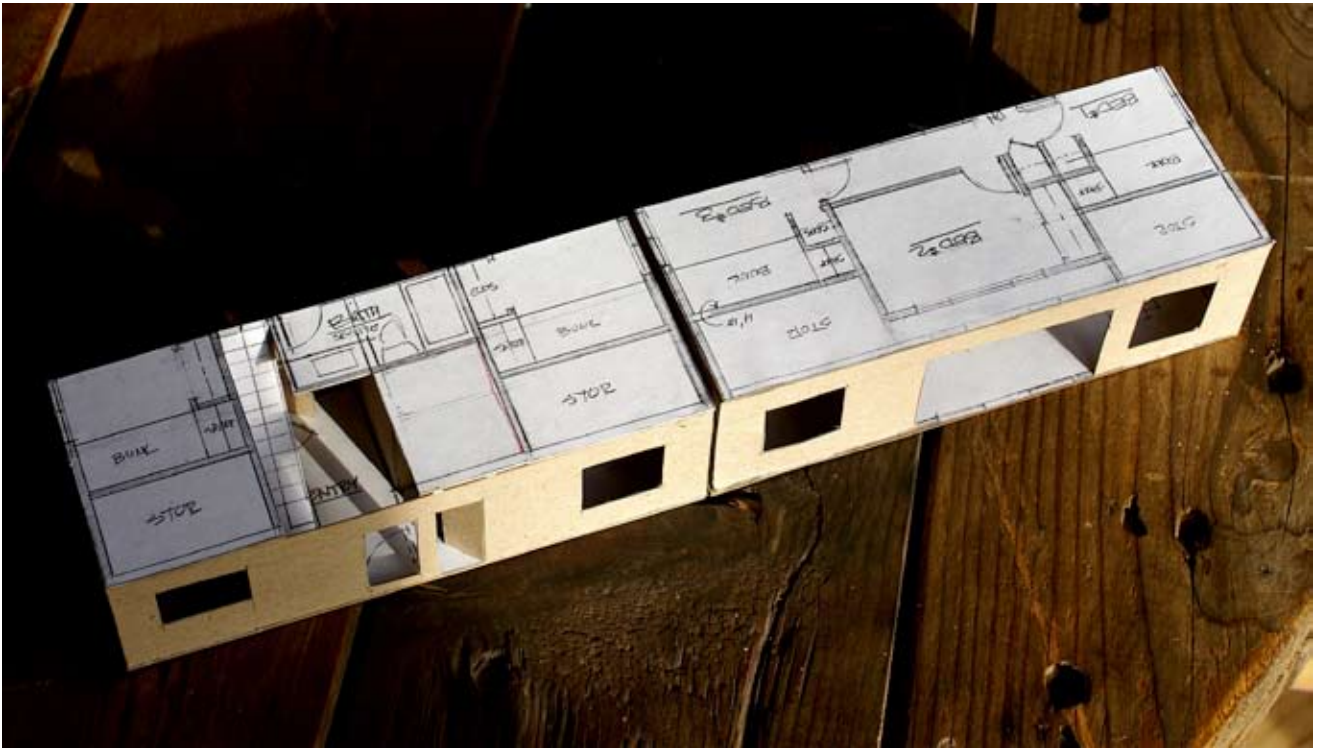


MODULAR UNITS (ABOVE) ↑

TRANSPORT
CONFIGURATION
(RIGHT) →

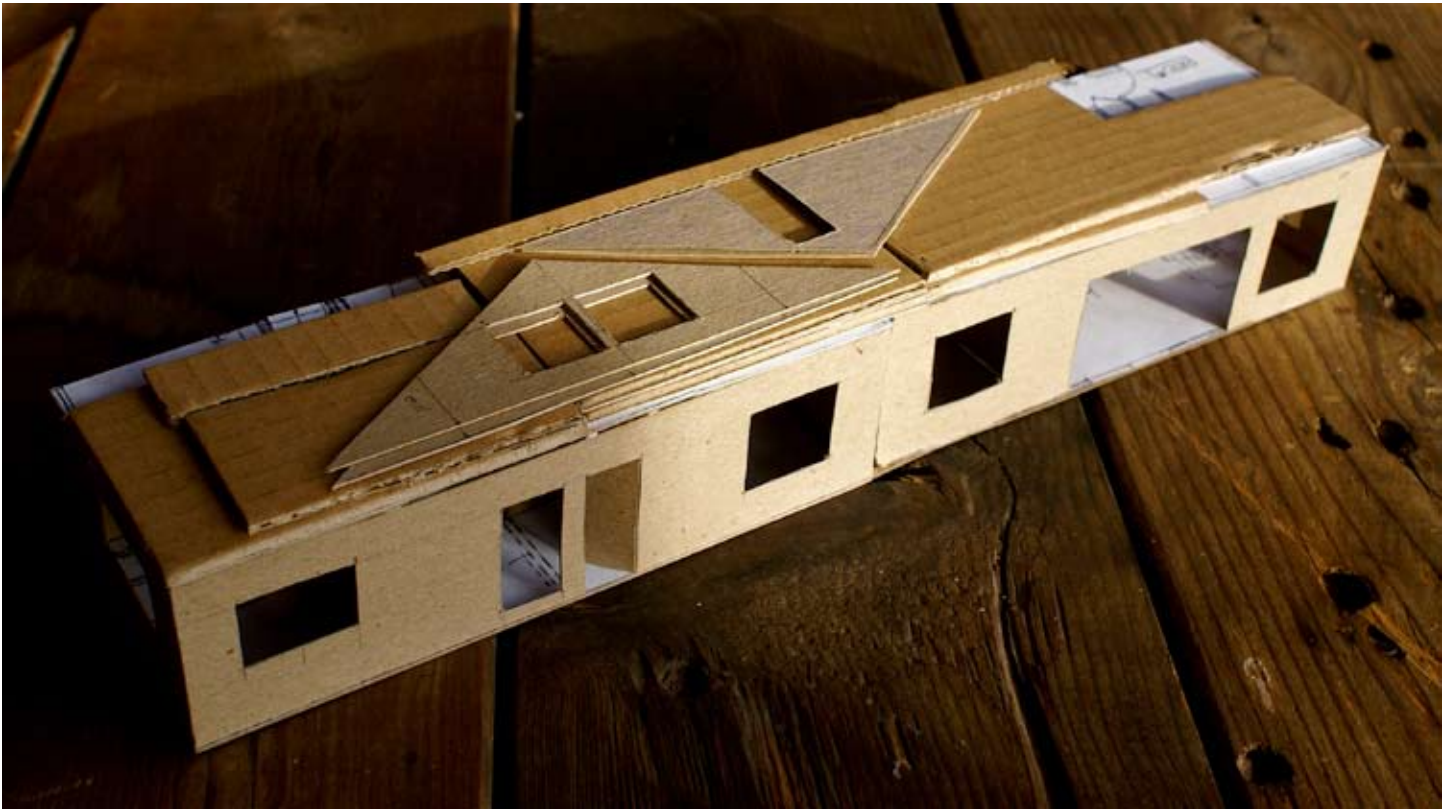
Flexplex is designed for single trailer delivery of entire house, and single day on-site assembly and weathering-in.





*The two units are assembled on a single frame,
then cut apart on site after delivery.*





Modules ready for shipping, above, with SIP roof panels, ridge beam, and gables on top. Assembled on site, with gable walls in place, below.

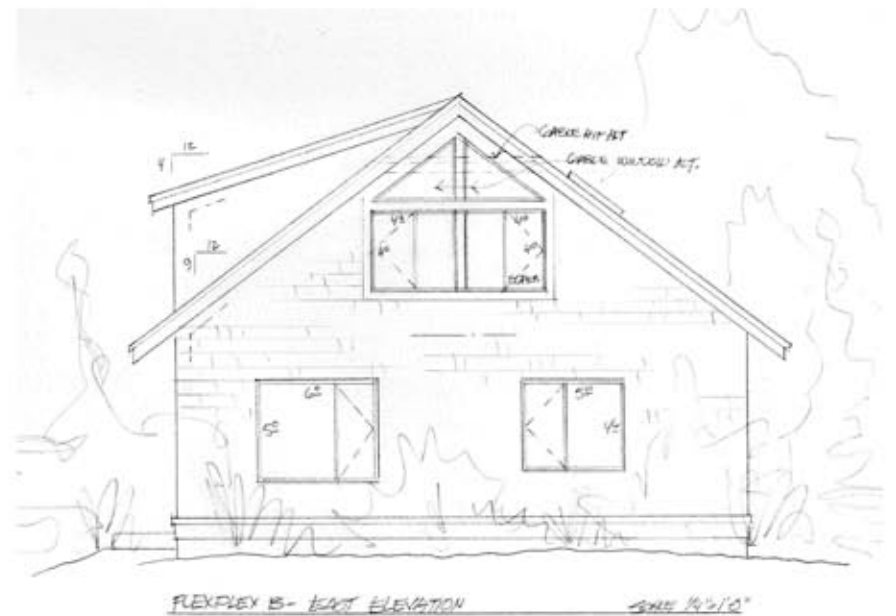
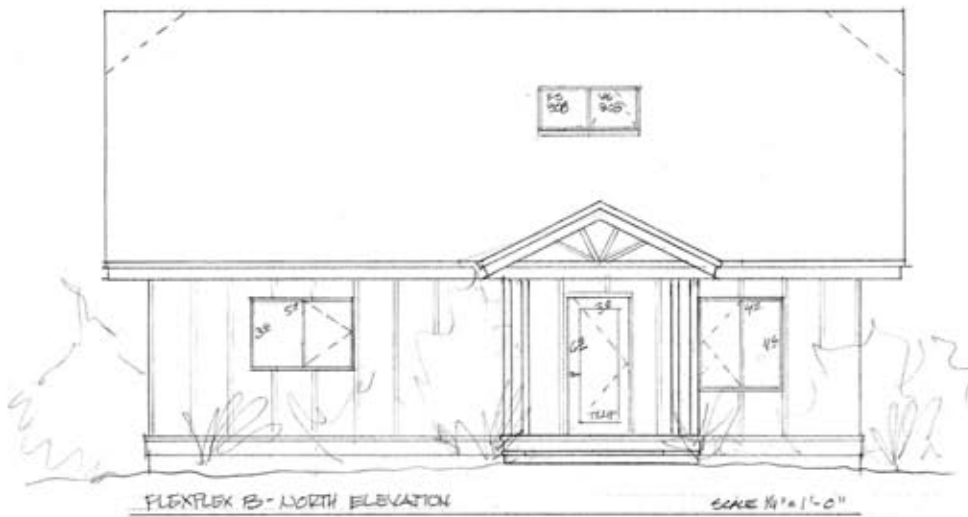
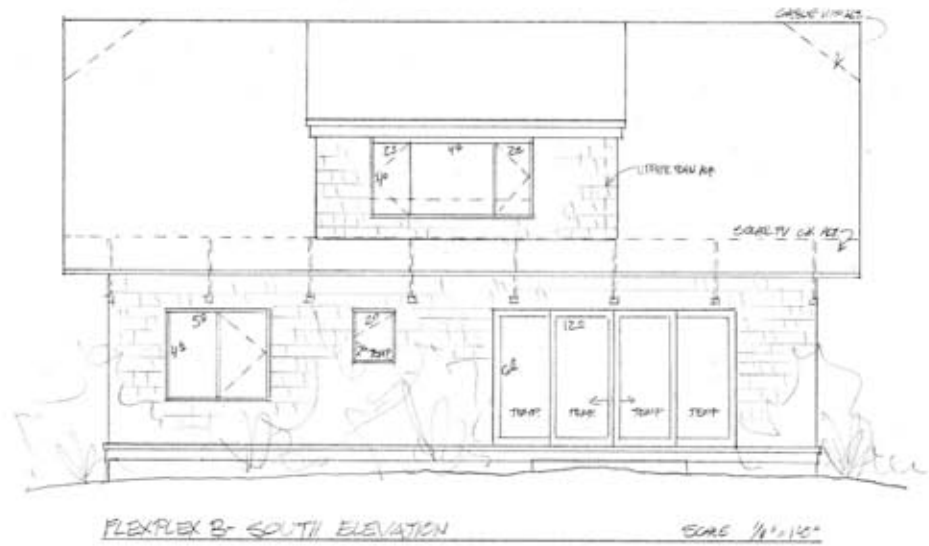




Roof panels are crane installed on site, with insulated, finished ceiling. Panelization allows normal roof overhangs not usually possible with factory modules.

Upstairs floor is already installed and plumbed. Finish of upper level can be by owner or before move-in.











Interior of prototype with wood decking ceiling/upper-floor, "floor-room" gable bedrooms, low-cost kitchen, and renewable wood heat.

